



The

Texas Beekeepers Association

Journal



Killeen, Texas



TBA 2012 Annual Convention



November 8 - 11, 2012



Dadant

Attractive Honey Containers Make the Sale Queenline Glass Honey Jars

Muth Jars



M00223
One pound jar
Carton of 12
Ship wt. 14 lbs.
\$17.25

Check out our catalog for other
types and sizes of quality
honey containers!

Hex Jars

M01550 5.5 oz. Cartons of 12
Ship Wt. 5 lbs. \$8.95
M01551 9.5 oz. Cartons of 12
Ship Wt. 8 lbs. \$12.75
M01552 13.5 oz. Cartons of 12
Ship Wt. 9 lbs. \$13.50



Only
available
from
Hamilton, IL
location.

NEW

M00258
2 oz. Clear Bear
with caps c/50
Ship Wt. 3lbs
\$18.95



Honey Bears



M00255

M00255 12 oz. Regular Bears
with Cap and Collar (38mm) Cartons of 12
Case of 12 Ship Wt. 3 lbs. \$6.95
M00255CPN 12 oz. Clear Bears
with Cap and Collar (38mm) Cartons of 12
Case of 12 Ship Wt. 3 lbs. \$8.25
M00256 Bulk Pack - 250 per case
1-4 Cases 250 per case . . \$91.95 per case
5 & Up Cases \$89.95 per case
Ship wt. 30 lbs. per case

M00256CPN 12 oz. Clear Panel Bears
with Cap and Collar (38mm)
1-4 Cases \$169.95 per case
5 & Up Cases \$162.95 per case
Ship wt. 30 lbs. per case

* 8 oz. and 2 lb. bears are also available.



3 lb. Glass Round Jars (Quarts)

Carton of 12 with
white plastic lids
M001932
1-99 \$13.65
per Carton
(All Ship Wts. 12 lbs.
per carton.)

Size of Jar Honey Ca- pacity	Number of Jars Per Carton	Lid* Style (see below)	Order Number	Ship Weight Per Carton lbs.	Price Per Carton 1-99 Cartons
8 ounces	24	1 (48 mm)	M001952	10	\$14.75
1 pound	12	1 (58 mm)	M001962	8	\$9.43
1 pound	24	1 (58 mm)	M001972	14	\$17.58
2 pound	12	1 (63 mm)	M001982	12	\$12.60
4 pound	6	(G70)	M001992	10	\$12.05

Lid Style White plastic (glass not shipped by UPS)

*We reserve the right to substitute lids should the style you requested not be available.



Classic Plastic Honey Jars

with 38mm Snap Caps

Jar Size	No. of Jars Per Ctn.	Item Number	Ship Wt. Per Ctn. lbs.	Price Per Ctn. 1-99 Cartons
8 oz.	24	M01150	2	\$12.95
1 pound	24	M01151	3	15.42
1½ pound	24	M01152	4	18.40
2 pound	12	M01153	2	11.43

Please specify red or yellow snap caps.
If none specified yellow will be sent.

Call for Pricing on 100+ Cartons • All prices are FOB, Hamilton, IL
Note: Plastic containers may ship at individual weights listed not combined weights.
All prices are subject to change.

DADANT
WEBSITE



www.dadant.com

• 1169 BONHAM ST, PARIS, TX 75460 • PHONE (903) 784-6145 • FAX (903) 784-2161 • TOLL FREE 1-877-632-3268 •

DADANT@
DADANT.COM



President's Report



Texas Beekeepers Association 2012 Convention Site November 8th - 11th

Greetings Beekeepers.

It's been a long, hot, dry summer. Thankfully, we have had a nice amount of rainfall in early September that may help many fall flowers to begin blooming. This is important so that the bees can forage for nectar and pollen to store up for the winter. Make sure that you are out checking your bees and preparing to start feeding them if needed. Sugar syrup and a pollen substitute are important to help the bees make it through the winter. Also now is the time to pre-order your queens for the spring.

Throughout this year, I have received many phone calls and emails from people interested in saving bees, keeping bees and in joining bee clubs. The interest in bees and beekeeping is unreal! It is important to follow up with individuals or leads that you hear about.

This year's TBA Convention will be held in Killeen, Texas. It will run from November 8th-11th. Now is the time to start preparing for the annual honey, photo and wax contest that is held at the Convention. I encourage everybody to bring an entry for the contests (see pages 18 & 19). It is always a great marketing tool to have a ribbon or award to show and claim "prize winning" honey. It is always a great time to socialize with other beekeepers and have fun. Last year many of us had a blast hanging out and singing together around the piano, after the Quiz Bowl.

Blake Shook has put together a very good program this year for the Convention. We will have a variety of different speakers this year with new topics and interesting presentations.

I hope to see many of you at the TBA Convention in November.



Shilo Inn Suites Hotel - Killeen, TX
3701 South W.S. Young Dr., Killeen, TX 76542
(next to Killeen Civic & Conference Center)
Room Rate \$89.00 King or Double Suite
1-800-222-2244

**Cut-off date for reservations is
October 24th.**

In This Issue

President's Report.....	3
Vice President's Report.....	4
Director's Report.....	5
Electronics and the Beehive.....	6
How Bees Decide What to Be.....	7
TBA Convention Program.....	8 - 9
Honey Queen Chair Report.....	10
Come and Learn about Bees.....	10
KLAB.....	11
Convention Speakers.....	12
Convention Registration Form.....	14
2012 Honey Queen Report.....	16
2012 Honey Princess Report.....	17
Convention Contest Rules and Entry.....	18 - 19
Beekeeping Tips for September.....	20
Is Pollen Part of Honey.....	20
In and Around Killeen, TX.....	21
Association Listings.....	22 - 23
Membership Report.....	24
S S Brantley Competition Continues.....	25



Vice President's Report

from Blake Shook



TBA Convention, Updates on Mite Treatments and Changes for Dadant

Hello from a very green and wet North Texas! Last year was one of the worst droughts in Texas history, and this year for us in North Texas it has been one of the wettest in years. We actually had green grass throughout August! I hope all of you did well with your honey harvest, and are looking forward to another great year in 2013!

I would like to say a few words about the upcoming TBA Convention in Killeen. I believe everyone, regardless of your hive count, will find this year's program extremely informative. I would encourage all of you to take a look at the agenda in this month's Journal. If you have any questions, or would like any more information about the speakers, just shoot me an e-mail at blake@desertcreekhoney.com. We will have 4 speakers from outside Texas, and several from within the state. Topics will range from the latest news and updates on pests and diseases, to top bar hives, to why Monsanto is interested in beekeeping. I can truly say that you will be receiving information at this Convention that you will not hear anywhere else!

I have had many people asking me lately about what is happening in the world of mite treatments. Last I have heard, (which could be outdated by tomorrow), there still hasn't been much success in legalizing any form of Amitraz treatments. However, a few treatment companies are still trying their best to make it happen. Unfortunately, the EPA is going to, purportedly, temporarily pull AgiGuard off the market citing labeling issues. Formic Acid is under scrutiny as well. So, basically, if you need mite treatment this fall, get it as quickly as you can. There may not be a shortage, but better safe than sorry.

Some sad news for all of us here in Texas is that Ray Latner, Dadant's Paris, TX Branch Manager, and past Director for TBA is leaving the Paris Texas branch, and will be managing the Florida Dadant branch. We know this will be a great opportunity for Ray, and we are very excited for him, and his family. He will however, be greatly missed by all of us in Texas! If you have a chance, send Ray an e-mail or give him a call and thank him for his long time support of TBA, and all the beekeepers in Texas!

I very much look forward to seeing all of you in Killeen!

Texas Honey Queen Auction Fund Raiser

Most of our TBA Members are aware of how the Texas Honey Queen Program is financed. At the Convention each year, interested members bring beekeeping related items to be auctioned off with the proceeds providing the funds to keep your Honey Queen Program going. This has proven to be a fun time at the Annual Banquet with many members having the opportunity to contribute to one of the best programs of any state.

Texas has had much success in providing very strong competitors in the selection for the American Honey Queen. It would not be so without your support. Your funds provide the ability for the Texas Honey Queen to travel extensively in Texas promoting honey. Most of our Queens travel 4,000 to 6,000 miles each year in the State of Texas and make presentations nearly every week.

This strong promotional schedule provides a good training ground and the opportunity for many local clubs and individual beekeepers to have first class promotional help with their only cost being the hosting of the Queen.

Your help is needed. With the continued increase in the cost of motor fuel and increased airfares, the travel budget gets tighter. If you are planning to attend the Annual Convention in Killeen, November 8th - 11th, please bring a special beekeeping related item to contribute to the auction.

Bring your pocketbook also to bid on an item or two donated by someone else. If you are unable to attend, please send a contribution to the Treasurer, Jimmie Oakley, for the Honey Queen Program. It will be very much appreciated.



Director's Report

from Chris Moore

*Brazoria County Harris County
Houston Fort Bend*



The most common question I get : You know what it is....

My answer : Yes, more than I can count

The second most common question : How's the honey business ?

My answer : It's sticky, in a lot of different ways.

.....Well, there is always next year..... ??? if we can get there

While this year was far better than last, we still fell far short of an average honey crop. After the record drought of 2011, our area finally started getting some rain last December. It looked like we may have a decent spring buildup after all, but boy were all the plants confused as to when they were to bloom. I would say everything was a

good 2-3 weeks early, which meant our spring build up was cut way short.

We have moved our bees back south for the winter – and are currently applying another mite treatment. (we are now treating 3x per year) This fall looks promising, after some timely summer rains.. I think the bees will have a good chance to fatten up before winter. We are still planning on feeding pollen patties in late fall – hopefully winter losses will be mild.

TBA Convention is right around the corner, Blake has lined up some great speakers. Killeen is a great central Texas location for all to attend.

Hope to see you there.

QUEEN BEES
3# Package of Bees w/Queen

ASSEMBLED BEGINNER'S KITS

ORDER NOW FOR 2013 SHIPPING

R WEAVER APIARIES
SINCE 1888

FAMOUS QUEENS AND PACKAGE BEES

BEEKEEPING SUPPLIES
• BOOKS • DVDS

WEAVER BUCKFAST AND ALL-AMERICAN (ITALIAN)

Phone: 936.825.2333 16495 CR 319 Fax: 936.825.3642
Email: rweaver@rweaver.com Navasota, TX 77868 www.rweaver.com

QUEEN CELLS • PURE HONEY

Electronics and the Beehive

William G Meikle, Honey Bee Research Unit, Weslaco

Most of us are familiar with many new technologies and how they apply to beekeeping and bee research. Advances in genetics and breeding have taken queen production to a new level. Detection of diseases, particularly microbial and viral diseases, has become many times more sensitive as well as much cheaper; likewise work on bee physiology and behavior.

Another field which is getting increasing attention is that of electronic monitoring of beehives - as electronics, and computer processing power and memory, have gotten cheaper, it has become much cheaper to develop monitoring devices that use cameras, microphones, piezoelectric sensors and other components. In fact, at this point the challenging part is not in finding a way to collect the data, but rather to process and understand the resulting data stream, which can be huge.

I just attended a workshop on "Hive Stress Monitoring Devices" at the Eastern Apicultural Society, in Burlington VT, at which several of us presented our work in the general field of electronic monitoring of beehives. The workshop was organized by Frank Linton, who has himself worked for a number of years on continuous monitoring of temperature data. Several presenters showed or demonstrated devices they were working on, some of which are intended to diagnose any problems in a given hive and others to continuously monitor hives so that, with an internet connection and a few key strokes, a beekeeper or bee researcher can instantly see the status of the hives.

The kinds of devices presented fell into 3 main groups: electronic balances (weight data); acoustics (sound data); and cameras (image data). I myself was in the first category; weight data. I did not present a device per se; I just talked about what continuous weight data can tell us, and provided some data analysis methods for continuous data that provide clues about hive health and activity. This is work I intend to pursue in the next few years. The data I have come from outdoor balances with relatively high precision (about ± 30 grams, if you take into account the scale and the 12 bit datalogger I used to record the hourly weight data). These scales were expensive and probably not of much interest to sideliners or others with a smaller research budget, but I hope to use information from those studies to learn how to exploit data from less expensive and less precise scales. By breaking several month's worth of hourly weight data into different parts (for example, the running daily average and the within-day change) and comparing those data with data from visiting the hive, we found that weight data is rich in information - much more so than we had thought before.

In another presentation, Dr. Wayne Esais, formerly

of NASA and now with the University of Maryland, presented a light, inexpensive yet durable electronic scale his group had developed; his focus is to get as many beekeepers as he can signed up to provide daily hive data to his web site for climate studies. For more information, please see: <http://honeybeenet.gsfc.nasa.gov>.

Some of the most intriguing presentations concerned the use of acoustics. Dr. Jerry Bromenshank and Robert Seccomb, of Bee Alert Technology, Inc., in Missoula MT, presented a device that uses simply the auditory signal to determine whether the hive is Africanized, whether it has varroa mites, and whether it is suffering from any of several diseases, including AFB and Nosema. The device cost a bit less than \$500, so most beekeepers would probably only afford one. It was a work in progress; they were still adding to their library of sounds to be able to detect, for example, small hive beetle, but I am sure they would welcome inquiries if anyone is interested. Dr. Bromenshank described many kinds of sensors he and his team have been working on - indeed, it would be difficult to come up with an idea for a sensor that they have not, in some way, tried to build.

Dr. Huw Evans and his wife Sarah, of Arnia (www.arnia.co.uk), a British company, have developed a device for "listening in" on the bees - it records the sounds of the hive, temperature and other variables, and connects via wireless network, where a beekeeper can examine the raw data or use software to analyze the data and diagnose problems. These bee monitoring devices cost less than \$100 each, but since they are attached to the hive in question can only be used on one hive at a time. Dr. David Atauri, a researcher from Spain, presented work on a device for recording and analyzing field visit data from hives - an electronic version of the hive data sheets many of us have used, but he was also very keen on developing in-hive acoustic sensors and in analyzing the resulting data.

With respect to image data, Stephen Engels of StephensApiary.com presented his work on within-hive photography, as well as on developing vibration sensors (he also has a patent pending on a novel design for an electronic hive scale). He has worked on the collection and analysis of vibration data in the comb. Stephen's research was also largely a work in progress, but he, like several presenters, was clearly a wizard in electronics and wireless communication and I am sure he will be coming up with new and interesting ideas in the near future. Recently I was contacted by an Australian group who were not at

(continued on page 17)

How Bees Decide What To Be

From ScienceBlog

Johns Hopkins scientists report what is believed to be the first evidence that complex, reversible behavioral patterns in bees – and presumably other animals – are linked to reversible chemical tags on genes.

The scientists say what is most significant about the new study, described online September 16 in *Nature Neuroscience*, is that for the first time DNA methylation “tagging” has been linked to something at the behavioral level of a whole organism. On top of that, they say, the behavior in question, and its corresponding molecular changes, are reversible, which has important implications for human health.

According to Andy Feinberg, M.D., M.P.H., Gilman scholar, professor of molecular medicine and director of the Center for Epigenetics at Hopkins’ Institute for Basic Biomedical Sciences, the addition of DNA methylation to genes has long been shown to play an important role in regulating gene activity in changing biological systems, like fate determination in stem cells or the creation of cancer cells. Curious about how epigenetics might contribute to behavior, he and his team studied a tried-and-true model of animal behavior: bees.

Working with bee expert Gro Amdam, Ph.D., associate professor of life sciences at Arizona State University and the Norwegian University of Life Sciences, Feinberg’s epigenetics team found significant differences in DNA methylation patterns in bees that have identical genetic sequences but vastly different behavioral patterns.

Employing a method that allows the researchers to analyze the whole genome at once, dubbed CHARM (comprehensive high-throughput arrays for relative methylation), the team analyzed the location of DNA methylations in the brains of worker bees of two different “professions.” All worker bees are female and, within a given hive, are all genetically identical sisters. However, they don’t all do the same thing; some nurse and some forage.

Nurses are generally younger and remain in the hive to take care of the queen and her larvae. When nurses mature, they become foragers that leave the hive to gather pollen and other supplies for the hive. “Genes themselves weren’t going to tell us what is responsible for the two types of behavior,” Feinberg says. “But epigenetics – and how it controls genes – could.”

Feinberg and Amdam started their experiment with new hives populated by bees of the same age. That removed the possibility that any differences they might find could be attributed to differences of age. “When young, age-matched bees enter a new hive, they divvy up their tasks

so that the right proportion becomes nurses and foragers,” explains Amdam. It is these two populations that were tested after painstakingly characterizing and marking each bee with its “professional,” or behavioral, category.

Analyzing the patterns of DNA methylation in the brains of 21 nurses and 21 foragers, the team found 155 regions of DNA that had different tag patterns in the two types of bees. The genes associated with the methylation differences were mostly regulatory genes known to affect the status of other genes. “Gene sequences without these tags are like roads without stop lights – gridlock,” says Feinberg.

Once they knew differences existed, they could take the next step to determine if they were permanent. “When there are too few nurses, the foragers can step in and take their places, reverting to their former practices,” says Amdam. The researchers used this strategy to see whether foraging bees would maintain their foraging genetic tags when forced to start acting like nurses again. So they removed all of the nurses from their hives and waited several weeks for the hive to restore balance.

That done, the team again looked for differences in DNA methylation patterns, this time between foragers that remained foragers and those that became nurses. One hundred and seven DNA regions showed different tags between the foragers and the reverted nurses, suggesting that the epigenetic marks were not permanent but reversible and connected to the bees’ behavior and the facts of life in the hive.

Dramatically, Feinberg noted, more than half of those regions had already been identified among the 155 regions that change when nurses mature into foragers. These 57 regions are likely at the heart of the different behaviors exhibited by nurses and foragers, says Amdam. “It’s like one of those pictures that portray two different images depending on your angle of view,” she says. “The bee genome contains images of both nurses and foragers. The tags on the DNA give the brain its coordinates so that it knows what kind of behavior to project.”

The researchers say they hope their results may begin to shed light on complex behavioral issues in humans, such as learning, memory, stress response and mood disorders, which all involve interactions between genetic and epigenetic components similar to those in the study. A person’s underlying genetic sequence is acted upon by epigenetic tags, which may be affected by external cues to change in ways that create stable – but reversible – behavioral patterns.

2012 Texas Beekeepers Association Convention Program

Shilo Inn Suites Hotel, Killeen

November 8th - 11th, 2012

Thursday, November 8, 2012

9:30 am	Executive Committee Meeting – Ed Priest, TBA President
10:00 am - 2:00 pm	Kids Learning About Bees – Texas Honey Queen Committee
1:00 pm	2012 Convention Registration Opens - Jimmie Oakley, TBA Treasurer
7:00 pm	Bee Buzz Social and Honey Queen Reception -Shirley Acevedo and Rachael Seida, Texas Honey Queen Committee

Friday, November 9, 2012

Morning

7:00 am	Executive Committee Breakfast - Ed Priest, TBA President
8:00 am	Opening Ceremonies Invocation - Ed Priest, TBA President Welcome to Killeen – Ed Priest, TBA President
8:20 am	Honey Queen Presentation - Shirley Acevedo, Honey Queen Committee Co-Chair
8:35 am	An Overview of the American Beekeeping Industry and “How & Why” Monsanto is Interested – Jerry Hayes , Keynote Speaker
9:20 am	Research on Illegal Honey Entering USA - Dr. Vaughn Bryant, Texas A&M
10:00 am	Break
10:15 am	100 Ways to Feed your Bees – Eddie Collins, East Texas Beekeepers
10:45 am	Topic to be Announced - Frank Eischen, USDA Honey Bee Lab, Weslaco, TX
11:20 am	Top Bar Hives: Similarities and Differences from Langstroth Hives - Les Crowder
12:00 noon	Queen’s Luncheon or Lunch on Your Own

Afternoon

1:30 pm	The latest on CCD and Other Pests & Diseases - Jerry Hayes, Keynote Speaker
2:20 pm	Flight and Foraging Dynamics - How bees fly; their foraging habits, along with the nectar and pollen loads of the worker bees – Dr. Roger Hoopengartner, Keynote Speaker
2:55 pm	Texas Apiary Inspection: Report from Honey Bee and Pollen Analysis Survey - Paul Jackson, State Entomologist, Texas Apiary Inspection Service
3:15 pm	Break
3:30 pm	Topic to be Announced - Henry Graham, USDA Honey Bee Lab, Weslaco, TX
4:15 pm	Growing Pains: Where and how decisions must be made as a beekeeping operation moves from one hive to dozens to hundreds - Dr. Roger Hoopengartner, Keynote Speaker
5:00 pm	Dinner on your own

Evening

7:00 pm	Honey, Wax, Photo and Gift Basket Contest Awards – Dr. Frank Eischen and Henry Graham, Contest Committee
7:30 pm	Queen’s Quiz Bowl - Shirley Acevedo and Rachel Seida, Honey Queen Committee

2012 Texas Beekeepers Association Convention Program

Shilo Inn Suites Hotel, Killeen

November 8th - 11th, 2012

Saturday, November 10, 2012

Morning

- 7:00 am** **Delegates Breakfast** - Everyone's Welcome – Dick Counts, Delegates Committee Chair, Arp, TX
- 8:30 am** **Sideline Beekeeping: Extracting Facility and Growing into a Sideline Business** - Russell Swinney, TBA Director, Area 2, Plano, TX
- 9:00 am** **Pollinators and Pollination: The basic flower types and the interactions of bees with flowers in the transfer of pollen; flower colors and attraction of bees for pollination** - Dr. Roger Hoopingarner, Keynote Speaker
- 9:30 am** **Marketing and Selling Honey** - Blake Shook, TBA Vice President, Owner: Desert Creek Honey Farm, McKinney, TX
- 10:00 am** **Break**
- 10:15 am** **Question and Answer Panel: An overview of Four Expert Beekeepers' Year**
Chris Moore, TBA Director, Area 6 – Moore Honey, Koontze, TX
Todd Youngblood, TBA Past President – E & T Packing Company, Pearsall, TX
Blake Shook, TBA Vice President - Desert Creek Honey Farm, McKinney, TX
Clint Weaver, TBA Director, Area 6 – R Weaver Apiaries, Navasota, TX
- 11:15 am** **Splitting Hives** - Eddie Collins, East Texas Beekeepers
- 12:00 noon** **Lunch on your own**

Afternoon

- 1:30 pm** **Queen Rearing** - Eddie Collins, East Texas Beekeepers
- 2:00 pm** **An Overview and "How To" of Honey Websites** –Blake Shook, TBA Vice President, Owner: Desert Creek Honey Farm, McKinney, TX
- 2:30 pm** **Topic to Be Announced**
- 3:00 pm - 5:00 pm** **Texas Beekeepers Association Business Meeting** – Ed Priest, TBA President

Evening

- 6:30 pm** **Reception and Awards Banquet**
Dr. John G. Thomas Meritorious Service Award
President's Award
Jim Petty Memorial Award - Texas Beekeeper of the Year
2012 Texas Honey Queen Coronation
Queen's Auction

Sunday, November 11, 2012

- 8:00 am** **Executive Committee Meeting**

Honey Queen Committee Chair Report

Dear Texas Beekeepers,

We look forward to seeing you soon!

At the **Shilo Inn Suites Hotel in Killeen, TX**, for the **Texas Beekeepers Association Convention**, that is! Our American Honey Princess, Danielle Dale, from the western Wisconsin town of Sparta, will be our guest. Other dear royalty who will come are Texas Honey Queen, Caroline Adams from Plano; Texas Honey Princess, Rebekah Jones from Spicewood; East Texas Honey Queen, Bekah Lenamond from Wills Point; East Texas Honey Princess, Hayden Wolf from Big Sandy; Williamson County Area Honey Queen, Lesli Tucker from Belton; Collin County Honey Queen, Shelby Kilpatrick from Copper Canyon; and Collin County Honey Princess, Shannon LaGrave from Farmersville. You will definitely be in the company of numerous lovely beekeepers.

We invite you to join our Queens and Princesses at **Kids Learning about Bees** on Thursday morning, November 8, 2012. We'll be inviting local school children and home-schooled children to join us at Shilo Inn for a tour of 8 – 10 beekeeping stations, including an observation hive of honey bees and rolling foundation beeswax candles. We will need a number of volunteers. Won't you be one?

Thursday evening of the Convention - the **Bee Buzz**, where each of the Honey Queens and Princesses will have a table of honey delights (light snack food made with honey) and her scrapbook of events and items of personal interest to her. Do join us for the camaraderie, light food fare and sweets made with honey.

Friday morning, 8 AM, will be the **Opening Ceremony** and first speakers of the Convention. Just prior to a keynote speaker, the Honey Queens and Princesses will briefly introduce themselves. Be certain to get your honey, wax, gift basket, and photos entered in the annual judging contest very early on Friday morning.

Time for lunch - the **Queen's Luncheon!** We always have a nice meal and something special for the Convention attendees who buy their ticket for this once-a-year event! Be sure to turn in to Lavada Talbert your items for Saturday night's auction.

Friday night at the **Quiz Bowl** - entertainment and laughs with Henry Graham and judging awards followed by a beekeeping-knowledge competition of Honey Queens, Princesses and beekeepers from the audience. Oh yes . . . we all go out for ice cream afterwards.

Saturday morning – interviews for **2013 Texas Honey Queen/Texas Honey Princess**.

Saturday Night Banquet – very nice sit-down **Dinner, Awards, Coronation and Auction** of bee-related items benefitting the Texas Honey Queen Program.

Again, we look forward to seeing you soon at the Honey Queen and Princess activities while you enjoy the Texas Beekeepers Association Convention!

Thanking you,

Shirley Acevedo
shirley@acebees.com
(214) 542-8276

Rachael Seida
rachaelseida@hotmail.com
(214) 578-3477

Beginning Beekeeper's Clinic at Killeen Convention

COME AND LEARN ABOUT BEES

Open to the Public and FREE

The Nature of Honey Bees

Saturday Morning from 9am until Noon

Fundamentals of Beekeeping

Shilo Inn & Suites Hotel, Killeen, TX

How to Get Started

Experienced Beekeepers to Teach What You Need to Know



KIDS LEARNING ABOUT BEES



Hosted by:
Texas Beekeepers Association www.texasbeekeepers.org

Thursday, November 8, 2012
10 AM- 2 PM

Shilo Inn Hotel
3701 South W.S. Young Dr.
(next to Killeen Civic & Conference Center)
Killeen, Texas
1-800-222-2244

This free event is open to school children of all ages, accompanied by an adult, during the Texas Beekeepers Association annual convention.

Educational stations will be manned by students and experienced beekeepers. Meet Buzzy Bear and Honey Queens and Princesses from Texas who will escort groups through the 30-45 minute tour of the educational stations which will include:

- An observation hive of honey bees
- Bee suit, hat, veil, gloves
- Honey extracting equipment
- Bee hive box, smoker, and tools
- Pollination Display
- Beeswax candle making
- Posters
- Handouts
- Bee related items and honey for purchase
- Honey Queen display tables
- Buzzy Bear

Contact J'Neena Swinney to register
Cell 214-546-7363 Email jswinney@interstructure.net
For your time slot, please email your name, number in your party, and a contact phone number to jswinney@interstructure.net

We look forward to seeing you at the Shilo Inn Hotel!



TEXAS BEEKEEPERS ASSOCIATION



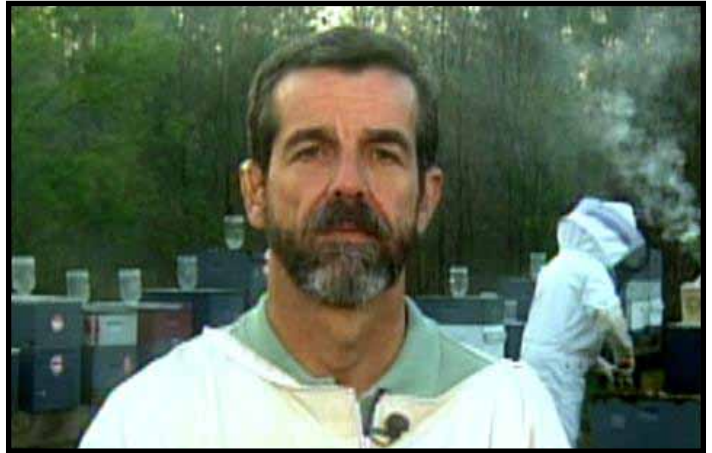
2012 TBA Convention Speakers



Dr. Roger Hoopingarner

Dr. Roger Hoopingarner got his start in beekeeping as a boy scout 65 years ago. With that interest he went on to receive his B.S. degree from Michigan State University in Entomology and his M.S. and Ph.D. degrees from the University of Wisconsin, Madison. His doctoral research was on the genetics and environmental factors in queen rearing.

After a post-doctoral fellowship at the University of Wisconsin, he joined the faculty at Michigan State University's Entomology Department where he remained doing research, teaching and extension in insect physiology and apiculture for 38 years. His research interests involved fruit pollination, disease transmission, population dynamics and insecticide interactions with insects and animals.



Jerry Hayes

Jerry Hayes has served two terms as President of the Apiary Inspectors of America group and is a founding member of the Colony Collapse Disorder (CCD) Working Group. He is currently a science advisor for Project Apis Mellifera and is the contributor of the American Bee Journal's Q&A column "The Classroom" as well as a book of the same title. He has authored or co-authored dozens of published research papers. He previously served as Chief of the Apiary Inspection Section for Florida's Department of Agriculture and Consumer Services. He has a long history with Beeologics, having previously served on Beeologics' technology advisory board working with colleagues in government and university researchers on Beeologics' efforts to help the global apiculture industry. Jerry is currently employed by Monsanto, who acquired Beeologics last year.



Les Crowder

Les Crowder has devoted his entire adult life to the study and care of honey bees. Dedicated to finding organic and natural solutions for problems normally treated with chemicals, he designed his own top-bar hives and set about discovering how to treat disease and genetic weaknesses through plant medicine and selective breeding.

He has been a leader in his community, having served as New Mexico's honey bee inspector and President of the State's Beekeepers Association. He is an avid storyteller and has spoken at the New Mexico Organic Farm Conference every year for over fifteen years.

Les built his own home, using the hexagonal shape in honey bee combs. He is also a certified teacher and enjoys teaching children Spanish and Science. He raises sheep and poultry as well as honey bees.

Les believes that the natural, low-stress methods of Top-Bar Beekeeping are perfect for home and hobbyist beekeepers who have the time and interest in keeping bees intensively and holistically, as well as home orchardists, gardeners and permaculture practitioners who look to bees for pollination as well as honey or beeswax.



Professor Vaughn Bryant

Most of his research focuses on the study of fossil pollen and other plant remains recovered from archaeological sites on land and from shipwreck and other underwater sites. For much of his career he has studied the contents of ancient human feces (coprolites) and used those data to reconstruct the diets and paleonutrition of ancient human societies. Some of those studies have focused on coprolites from Homo erectus, Neandertals, and early Holocene cultures throughout North and South America. Currently, he and his students are also studying the origin and spread of food use throughout the Americas using data recovered from the analysis of ancient starch remains recovered from archaeological sites. His other research focus is on the use of pollen in forensic applications to aid law enforcement agencies in their pursuit and conviction of criminals and international terrorists. One other research specialty, which he has pioneered over the course of more than 30 years, centers on the pollen analysis of commercial honey produced in countries throughout the world in an effort to verify both the country of origin and the primary nectar sources of honey.

Bee Sex Essentials



Lawrence John Connor

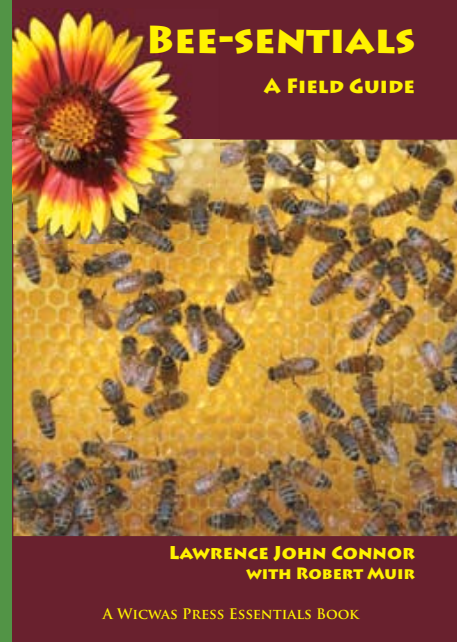
Easy-to-understand guide to honey bee reproduction.
Delivered* \$25

Queen Rearing Essentials



Lawrence John Connor

Learn to raise your own survivor/mite resistant queens.
Delivered* \$23



LAWRENCE JOHN CONNOR
WITH ROBERT MUIR

A WICWAS PRESS ESSENTIALS BOOK

A fact-filled basic book.
25 pages of honey plants.
A must-have!
Delivered* \$29.95.

Bee Equipment Essentials

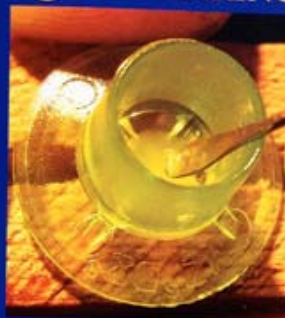


Build your own hives, feeders, nucs, queen frames, extractors, bottling equipment, swarm capture tools and jigs
Ed Simon

WICWAS ESSENTIALS SERIES

How to make and use many parts of the bee hive, nucleus, swarm and honey tools. Delivered* \$20

SCIENTIFIC QUEEN-REARING



G. M. DOOLITTLE

A Year's Work in an Out-Apiary

G. M. Doolittle

An average of 114 1/2 pounds of honey per colony in a poor season, and how it was done.



CENTENARY EDITION
PUBLISHED BY WICWAS PRESS

The 'father' of modern queen rearing, Doolittle's reprints offer useful insight.
Delivered* \$23 each

Wicwas Press 1620 Miller Road, Kalamazoo, MI 49001
Go to www.wicwas.com to order with PayPal. *USA media mail

TEXAS BEEKEEPERS ASSOCIATION



Registration Form

Annual Convention
November 8-11, 2012



Shilo Inn Suites Hotel - Killeen, TX 76542

3701 South W. S. Young Dr. - Front Desk: 254-699-0999 or Toll Free Reservations: 1-800-222-2244

Name : _____ Phone : _____ (Home)

Spouse's Name : _____ (Cell)

Address : _____ (Work)

City : _____ State : _____ Zip : _____

Other Info: *Do you have?*

****e-mail Address:** _____

****To save the Association money on print & postage may we e-mail your copy of the Journal? [] YES**

Business Name: _____

Local Association Affiliation: _____

Beekeeper Classification

Commercial/Sideline/Small Scale

(300+) (25-299) (0-24)

(Number of Colonies)

TBA Membership Renewal (Annual Dues *Jan.1 thru Dec.31* \$20.00 per member)

2013 Member Dues	\$20.00	_____
2013 Spouse Dues	20.00	_____
2012 member dues (if unpaid)	20.00	_____
2012 spouse dues (if unpaid)	20.00	_____

Convention Registration:

Early Bird Registration

Post Marked by
Friday Nov.2nd

Convention Registration

at the Hotel

TBA Member	\$50.00	\$65.00	_____
Spouse - Who is TBA member	15.00	20.00	_____
Who is non-member	25.00	30.00	_____
NON-MEMBER Registration	75.00	90.00	_____
Queen's Luncheon (ticket required)	30.00	35.00	each X []	_____
Friday, 11/9/12 12:00noon - 1:00pm				
TBA Annual Banquet (ticket required)	40.00	45.00	each X []	_____
Saturday, 11/10/12 6:30pm - 10:30pm				
Children age 18 and under	20.00	25.00	each X []	_____

Fund Donations

A&M Honey Bee Research Fund	_____
Legislative Fund	_____
State Fair Honey Booth	_____
Texas Honey Queen Fund	_____

Make checks payable to: **Texas Beekeepers Association** **Total Due \$** _____

Send to: Jimmie L. Oakley, 1799 Goodson Court - Round Rock, TX 78664

Remittance: Cash / Check: _____



Chemical Free

BeeWeaver.com

For over 120 years our company has served Texas Beekeepers by providing quality bees & queens.

**Find the BeeWeaver Bee near you!
2013 Customer Pick Up Locations:**

Navasota

Austin

Dallas

San Antonio



Inspired by the beauty, economy, and elegance of the hard-working honeybee, our BeeGoods are sure to please bee-lovers of every stripe.

Order online today for Thanksgiving and Holiday Gifts.
Find our new Bee Shop @ BeeGoodsMercantile.com

The Best Way to Bee

2012 Texas Honey Queen Report

from Caroline Adams



Hello, Beekeeping Friends!

I hope you are all doing very well and have been enjoying the cooler, fall-like weather. What a blessing to have a break from the summer temperatures!

Things have been well lately with my bees – I hope yours are well too! We have been

feeding our hives in preparation for winter. Two of our colonies are on the smaller, weaker size, so we are hoping to get their stores built up before it gets too cold. I also had a recent battle with wax moths. We had quite a bit of woodenware in storage, double-wrapped in trash bags with wax moth crystals inside. Unfortunately, unbeknownst to us, the crystals had evaporated due to the heat. As a result, the woodenware was no longer protected and wax moths had chewed through the bags and infested the boxes. A couple weekends ago, my brother, sister and I inspected the bags and removed the woodenware, scraping and saving the woodenware that could be used again and getting rid of the damaged, webbed equipment. The moths had wreaked havoc in some of the boxes. It was both sad and disgusting to see what the moths had done, so you can imagine my pleasure in squashing the live moths that were still in the bags. The neighbors probably thought I was crazy, sitting in our side-yard, scraping out boxes and happily killing the invaders (especially since I would yell at the moths as I chased them!) In the end though, we got the equipment cleaned up and placed in fresh bags with new, very potent crystals. We will be sure to replace the crystals sooner next time. I did have a pretty neat experience, though, while cleaning the boxes. I had been killing the moths and larvae as I cleaned. All of a sudden, I saw another moth and went after it. It flitted out of the box onto the ground and over to our neighbor's fence, where it began rapidly crawling up the boards. I was just going over to squash the moth with my hive tool when out of nowhere, a small green lizard ran up to the moth and caught it in its mouth! I was so surprised and pleased! I had not seen the lizard before, so I was quite taken back when it went after the moth. How nice to know that the lizards are on our side! It sure puts "integrated pest management" into a whole new perspective. Despite the problems we had with the moths,

the day certainly had a positive twist!

My family also extracted honey! One of our three hives had the brood box and five supers on top (we didn't extract from all five of these supers, as two of them were in the brood chamber). It was great though to see how well the bees had done compared to last year. We got several gallons off our hives and were so thankful for this year's rain and the harvest we had as a result of it!

As Honey Queen, I have had a couple of events this summer. On July 19th, I traveled to Round Rock, TX for the Round Rock Express Baseball game. The Texas Beekeepers Association had a booth set up at the game, where I worked with Texas Honey Princess, Rebekah Jones and Williamson County Honey Queen, Lesli Tucker, handing out trifold and literature and greeting game attendees. While at the game, I had the opportunity to have a pre-game, on-field interview! The game was being aired on a local radio station, and I also had the privilege of giving a live radio interview! These were the first two interviews I had ever done, and I sincerely enjoyed having



Texas Honey Queen, Caroline Adams with Round Rock Express VP, Entertainment, Promotions, Derrick Grubbs

the opportunity to promote honey bees and the beekeeping industry through the outlet of the media. While at the game I also had the great privilege of meeting the 1978 Texas Honey Queen and 1979 American Honey Princess, Janice Walker! It was wonderful to meet her for the first time and to visit with a former Texas Honey Queen. She was so kind and encouraging, and I sincerely enjoyed

(continued on page 20)

2012 Texas Honey Princess Report

from Rebekah Jones

Dear Beekeeping Friends,

Autumn is in the air! I can't believe the rain we have had as well as the cooler temperatures. I'm loving it and I am sure that the bees are reaping the benefits! Summer has been very eventful, but more in my family life than in the honey queen world. Still, I have had a few things to do which I would love to share with you!

On July 20th, I had the great pleasure of attending a Round Rock Express game. Now, I know what you're thinking, but this was a wonderful event in which Texas Honey Queen, Caroline Adams and WCABA Honey Queen, Lesli Tucker and I had the opportunity to share our love of bees with the public. There was a booth where we handed out our brochures as well as recipes using honey. Along with that we had an observation hive, provided by Jimmie and Kay Oakley, where people at the game could see what the inside of a hive looks like, as well as learn some fascinating facts about the honey bee. The theme of the game was "Honey." Lesli threw out the first pitch, while Caroline did an on-the-field interview before the game and also performed a live radio interview during the game. They both did a fantastic job and I enjoyed being along for the ride! A quick thanks to Chris Doggett for arranging this event!

Over the past couple of months, my home club, the Williamson County Area Beekeepers Association, has been gearing up for the TBA Convention, since we are the hosts this year. I am very excited at the prospect. I look forward to the possibility of seeing many more of my friends from WCABA at the Convention, since we are hosting it and they will not have to drive as far. I also hope to see you there as we learn and share information about

the amazing honey bee. The dates are November 8th-10th and the location is Killeen. It will be a great event!

As far as my bees go, they are doing very well and it looks like my family will enjoy a second honey harvest! Now, fall honey is known for being quite strong in flavor, but the way that I see it

and as it has been told to me, we already have harvested a good amount of summer honey which is very mild in flavor and which we share with others. The fall honey we will only use for my family, since we don't mind it, and we save the good, mild honey to share with the public. Besides, I always like some good, strong-flavored honey in tea or coffee!

The upcoming events that I am looking forward to include the Cooking with Honey Demos at State Fair of Texas, October 19th, 20th and 21st, a Healthy Living Event on October 27th, and the TBA Convention November 8th through the 11th.

I hope you and your bees are doing well and I look forward to seeing you soon!

God bless you!



Electronics and the Beehive

(continued from page 6)

was contacted by an Australian group who were not at the workshop but who are pursuing development of hive monitoring sensors that consist of a video camera linked to a computer which has sophisticated motion detection software to calculate the number of bees in a given visual field as well as their trajectories.

In short, wired hives are on their way. Most of us felt that wired hives will be a standard approach in the future, from the research scientist who can now monitor several

variables in real time, to the hobbyist or sidelinier who likes to keep track of a few hives (who doesn't?), to the professional who might have a few wired hives in each bee yard, just to check on hive activity and nectar flow, to even the grower who wants to check on bee forager traffic at peak bloom. It might seem odd now, but once you've got some sensors in hives, it is all too easy to envision more sensors and more data.



2012 TBA Convention Honey-Wax-Photo-Gift Basket Contests

The Texas Beekeepers Association Annual Honey, Wax, Photo and Gift Basket Contests will be held at our Annual Convention in Killeen on November 8 - 11. Judging will take place beginning Friday morning and the results presented on Friday night before the start of the Queens' Quiz Bowl.

Our thanks go out to the participants for their hard work in bringing in the finest honey and wax products in Texas. Our photo contestant winners received a cash award. The first place entry will be featured on a cover of the TBA Journal in the coming year and also could be featured in the 2012 Honey Queen Brochure if it works into the format.

The contest needs more entrants. Please join us in the contest and help to spread the word. If you have a friend that will not be attending the Convention, please bring their entries. We sure could use some assistance in judging the honey. Those of you interested, please let me know.

Thank You, Henry Graham.
Convention Contests Committee

2012 Texas Beekeepers Association Honey-Wax-Photo-Gift Basket Contest Entry Form

Name: _____

Check One:

Address: _____ ☐ I wish to retain my entry after the contest

City, State, Zip: _____ ☐ I wish my entry to go to the Texas Honey Queen Fund Auction

Entries @ \$3.00 each x number of entries: \$ _____

Entry Fee Total: \$ _____

Indicate Entries by circling:

Honey:

Water White
Extra White
Light White Amber
Amber
Chunk Comb
Square Section
Round Section
Creamed



Beeswax:

2 lb. Block - Natural
2 lb. Block - Bleached
Candles - Tapers
(one pair)
Craft



Photography:

Bees in Nature
Bees and Man
Products of the Hive
Essay (Collage)
Snapshot (Single)



Gift Basket:

Signature

Date

I affirm each of the above entries of honey was produced in my apiary.

I also affirm each beeswax entry was produced by me and each photograph entry was photographed personally.

2012 Convention Contest Rules: Honey-Wax-Photo-Gift Basket

Entry: All entries shall be made on the printed form provided or a photocopy thereof. Each entry shall be entered in its proper class. Only one entry allowed in each class by any contestant. Entry fee is \$3.00 for each entry, payable to the Texas Beekeepers Association. No identifying label or markers may be on any entry; coded tabs will be affixed when entered. Entry deadline is at the Convention, 9 am Friday, November 9, 2012.

Honey: (9 classes): **Liquid Honey** must be in 1 lb. queenline type glass jars. **Chunk Comb** or **Creamed Honey** must be in 1 lb. wide mouth, round glass jars. **Chunk Comb** entries must have the same honey in the comb as the liquid honey used to fill the jar. **Cut Comb** must be in clear 4" X 4" plastic boxes. If desired, honey entries may have labels and floral sources submitted in a separate envelope for each entry to be attached after the judging is complete.

Beeswax (4 classes): **Block Entries** shall be at least 2 lbs., have a flat bottom surface of at least 24 square inches and have a depth of at least 1 inch. **Candle tapers**, one pair, may be molded, dipped or rolled. **Craft Wax** entries may be carved, molded, rolled, painted, decorated, coated, etc., with multiple piece sets constituting a single entry.

Photo (6 classes): **Historical** emphasizes beekeeping in the past. There are no restrictions on formats. With your permission, we would like to make digital copies of your work for the TBA archives. Equipment will be on hand at the meeting for this and photos will be returned to you at the meeting. **Black and white, color prints and slides** will be combined in the same classes (**Bees in Nature, Bees and Man, Historical and Products of the Hive**). Each print will be limited to 8" X 10" overall. **Essay** will be a group of prints mounted on a mount board (any type) not exceeding 16" X 20", depicting a bee story or event. The order of essay photos must be clearly indicated. Brief captions may be used. **Snapshot** entries will be a 3" X 4" clearly depicting a relation to any facet of the beekeeping industry. Cash prizes will be awarded: First Place - \$25.00, Second Place - \$15.00 and Third Place - \$10.00.

Entry Source: each honey entry must have been produced in the contestant's own apiary. Wax entries must have been produced or made by the contestant. Photo entries must have been photographed by the contestant.

Honey Gift Basket: The purpose of this category is to allow persons who prepare honey gift baskets or other suitable container to show other TBA members how they might use this means of marketing their products.

The Entry: Theme for 2012: A honey gift assortment which may be given for any occasion for a man or woman and would retail for \$50.00 to \$75.00 **maximum**.

Required Contents: At least two containers of

100% pure honey, produced and packed by the entrant. (excludes flavored honey) **And** at least one of the following:

- A honey-based product made/or not made by the entrant (flavored honey, honey mustard, etc.)
- A honey/bee related item – made or not made by the entrant.

Optional Contents: Other honey/bee related items and/or non-related items, which the entrant feels will make the entry more saleable.

Note: A list of the contents must be affixed to the outside of the entry.

Preparation: The items must be clearly labeled, as they would be when offered for sale – except any marks identifying the entrant must be obscured or removed. Fresh labels must be supplied for application after judging is complete. The identifying marks could be covered with opaque labels or tape, which could be removed after judging is complete. The basket should be covered with plastic wrap and decorated appropriately for the theme, suitable for offering for sale at a retail price of \$50 to \$75 **maximum**. If the basket is shipped to the Convention, packing materials may be included and instructions should be included for the Honey Show Committee as to how to complete preparation for judging.

The judging criteria will be:

- Originality – 15 pts.
- Appropriateness to designated theme – 15 pts.
- Neatness of workmanship – 15 pts.
- Quality of products – 20 pts.
- Variety of products – 15 pts.
- Commercial appeal/saleability – 20 pts.

Total: 100 pts.

Judging will be done on Friday, November 9, 2012. Only judges will be allowed in the judging area. The judges' decisions shall be final.

Award Placements will be announced Friday night in conjunction with Honey Queen Quiz Bowl.

1st Place – 4 pts 2nd Place – 3 pts 3rd Place – 2 pts and 4th Place – 1 pt.

Disposition of Entries: It will be the option of each contestant to retain entries or donated them to benefit the Texas Honey Queen Fund.

Texas Honey Queen Report

(continued from page 16)

visiting with her! The entire event was a lot of fun and I was so thankful to be able to attend.

Recently, I had the opportunity to judge honey for the Collin County Hobby Beekeepers Association's annual honey contest. There were a whopping sixty-five jars entered in four different categories: liquid honey, chunk honey, comb honey and creamed honey. One of the entries was particularly interesting: it was similar to the chunk honey entries but instead of inserting the wax into the jar



Texas Honey Queen, Caroline Adams Judging Collin County Hobby Beekeepers Association Honey

with the honey, the beekeeper had actually gotten his bees to build the comb directly inside the glass jar with the wax attached to the edges. I had never seen an entry like that before, and though we did not actually judge it because it did not fit in any of the categories, it rightfully received "Honorable Mention" for the most creative entry! Thanks so much to everyone who entered and made the contest such a success!

Coming up, I will be quite busy. Along with the State Fair of Texas Cooking with Honey Demos and the TBA Convention, I will have several of out-of-town trips as well as local presentations, including presentations to Deaf groups! Stay tuned for more details! Also, feel free to check out the "Texas Honey Queen" page on Facebook to see photos and updates of my travels, as well as beekeeping information, videos and facts!

I hope you have a wonderful month, and I hope to see you all soon!



Beekeeping Tips for September

from Blake Shook

September is an important month for beekeepers. This month we should finish any extracting that has not been completed. Store cleaned supers carefully for the winter. We should also complete melting any wax cappings.

This is also the time to make decisions about medicating. If bees are medicated in September then supers should not be on hives. Check and treat for varroa mites.

Check for American Foulbrood and treat, if needed, with patties made of 1/3 lb. of Crisco, 2/3 lb. of sugar and 2 Tbs. of Terramycin. Each patty should weigh 1/2 lb. Use one patty per hive.

Our area may have a short fall honey flow. Nectar from goldenrod and asters is available most years. Strong hives will store a surplus.

September is also the month in which nucs to be overwintered can be started. A good five (5) frame nuc made during the first week of September will overwinter nicely and probably make a crop of honey in the spring.

Examine hives carefully in September. Failing queens can be replaced now. Weak hives can be combined with strong hives.

As in previous months continue to supply water and treat for fire ants.

Continue to feed colonies or nucs if necessary.

Is Pollen Part of Honey

The On-going Story from "Catch the Buzz"

The European Commission is moving to overturn a court ruling that pollen is an ingredient in honey. The Commission said that in line with World Trade Organization standards, the proposal defines pollen as a **natural constituent of honey and not as an ingredient**.

The change in EU rules, if accepted by all EU member states, would clarify the position for beekeepers left in limbo by the European Court of Justice ruling. The court said it considered pollen to be an ingredient in honey, rather than brought there naturally by the bees, and if it came from GM plants, the honey would have to carry a warning that it contained GM products.

The warning would be needed if GM pollen accounted for 0.9% of all the pollen in the honey. However, the Commission proposal recognizes that pollen is a natural constituent and not an ingredient of honey; it enters into the hive as a result of the activity of the bees and is found in honey regardless of whether the beekeeper intervenes.

"Consequently, since pollen is considered as a natural constituent of honey, EU labeling rules requiring a list of ingredients would not apply," the commission says.

In and Around Killeen, TX

Killeen is one of the fastest growing cities in Texas, due in part, to its neighbor Fort Hood, the largest military installation in the free world.

Founded in 1882 by the Santa Fe Railroad to serve as a shipping station for cotton and cattle, Killeen is centrally located in one of the fastest growing economic corridors in the nation and is within a three hour drive from 80% of the state!

This diverse community is home to over 125 restaurants featuring the unique flavors of more than 40 different cultures living here. We may speak 98 different dialects in Killeen, but our favorite is Texas Friendly!

Historical Sites

The Greater Killeen Chamber of Commerce can direct you to more than 40 sites in the area including Elvis' home, while stationed at Ft. Hood, birthplace of Oveta Culp Hobby, and several historical cemeteries.

www.killeenchamber.com

(254) 526-9551

City of Killeen Parks & Recreation runs over 20 different areas including the Andy K. Wells Hike & Bike Trail, Family Aquatics Center and the Killeen Athletic Complex. Lion's Club Park is home to the Tommie Harris Fitness Center located inside the Family Recreation Center.

www.ci.killeen.tx.us

(254) 501-8889

Belton Lake Outdoor Recreation Area (BLORA) provides family fun year round. Water lovers will enjoy boating, sailing, swimming, scuba diving, fishing, and relaxing. Springs Nature Center and Chalk Ridge Falls offer a pristine view, hiking trails and the opportunity for bird watching.

www.hoodmwr.com

(254) 287-2523

Mayborn Planetarium & Space Theater on the campus of Central Texas College, is one of the largest domed structures in the state. Come see a Planetarium Sky Show, Laser Light Show or Large Format Film in the 180-seat theater. It's an experience you'll never forget!

www.starsatnight.org

(254) 526-1800

Vive Les Arts hosts a variety of shows, musicals and children's theatre productions throughout the year.

www.vlatheatre.com

(254) 526-9090

Fort Hood

Fort Hood covers a total of 340-square miles and supports multiple units, a corps headquarters and a robust mobilization mission. Fort Hood also meets the training and support requirements for many smaller units and organizations, thus maintaining a vital defense force for the United States of America.

Fort Hood is nicknamed The Great Place because of the quality of life the post and area offer Soldiers and their families. These qualities are important, especially with home-basing initiatives, frequent deployments and family stability and support.

Points of Interest on Fort Hood include the 1st Cavalry Division Horse Detachment, where visitors can view the training grounds, horse stables, saddle shop and more of the last horse-mounted cavalry in the US Army, the 3rd Armored Cavalry Regiment and 1st Cavalry Division Museums, the 4th Infantry Division Memorial, and the Camp Hood Historic Chapel.

More information about Fort Hood is available at

www.hood.army.mil.



ACCESS INFO: All visitors to Ft. Hood, who do not have a valid Department of Defense decal on their vehicle, must obtain a visitor's pass from the Visitors Center at the Main Gate, just off Highway 190. Visitors will need CURRENT Driver's License, for the driver, and CURRENT ID for all other adults in the vehicle.

Additional documents needed are CURRENT proof of insurance and vehicle registration. **NO PASSES WILL BE ISSUED WITHOUT CURRENT DOCUMENTS.** Passes issued are for that day only.

For more information call the Marvin Leath Visitor's Center at 254-287-9909.

Listing of Local Beekeepers' Associations in Texas with TBA Delegate and Regular Meeting Information Shown for Each

Please forward any changes and/or additions to
John J. Talbert, Executive Secretary, john@sabinecreekhoney.com

Alamo Area Beekeepers Association

Edward Priest - (210) 722-7380

edward_p@sbcglobal.net

9570 Maidenstone - San Antonio, TX 78250

Meetings: 3rd Tuesday on odd # months; at
Helotes Ind. Baptist Church
15335 Bandera Rd; Helotes @ 7 pm

Brazoria County Beekeepers Association

Larry Hoehne - (979) 848-8780 or (979) 236-1385

233 Crestwood, Clute TX 77531

bcbassociation@gmail.com

www.brazoria-county-beekeepers-association.com

Meetings: 2nd Monday of each month at 7pm;
Brazoria County Extension Office
21017 County Road 171, Angleton TX 77515

Central Texas Beekeepers Association

Michael Kelling - (979) 277-0411

CentralTexasBeekeepers@gmail.com

www.centraltexasbeekeepers.org

1997 Tonckawa Hills Ln - Brenham, TX 77833

Meetings: Monthly on the 4th Thursday
(except November and December) at the
Washington County Fairgrounds
Brenham @ 7 pm

Coastal Bend Beekeepers Association

Deborah Houlihan - (361) 877-2428

crazybutterflychick@hotmail.com

445 Parade Dr., Corpus Christi, TX 78412

Meetings: First Thursday of each month at 6:30pm;
City of Corpus Garden Senior Center
5325 Greely Dr., Corpus Christi, TX 78412

Collin County Hobby Beekeepers Assn.

John J. Talbert - (972) 843-8084

john@sabinecreekhoney.com

P O Box 6 - Josephine, TX 75164

www.northtexasbeekeepers.org

Meetings: 2nd Monday of each month;
Heard Craig Hall, 306 N. Church St,
McKinney @ 6:30 pm

Concho Valley Beekeepers Association

Travis Lane - (325) 653-7226

6427 Goodland Lp - San Angelo, TX 76901

cvbeeassoc.com

Meetings: 3rd Tuesday of each month Jan-Nov
Texas A&M Research and Extension Center
7887 US Hwy 87 N, San Angelo @ 7:30 pm

Dino-Beekeepers Association

Dwain Cleveland - (254) 396-0655

dwaincleveland@windstream.net

www.dino-bee.com

Meetings: 1st Tuesday of month
Chachi's Mexican Restaurant
Highway 67 in Glen Rose @ 7pm

East Texas Beekeepers Association

Richard Counts - (903) 566-6789

dickcounts@bigplanet.com

16239 Audrey Lane - Arp, TX 75750

www.etba.info

Meetings: 1st Thursday of each month;
Room 104, RTDC Building; 1530 NE Lp 323
Tyler @ 6:45 pm

Fort Bend Beekeepers Association

1402 Band Road, Rosenberg, TX 77471

(281) 633-7029 (during office hours)

Jeff McMullan - Secretary - Treasurer

(281) 980-2363 (home): (281) 615-5346 (cell)

jeffmcmullan@comcast.net

Meetings: 2nd Tuesday of each month (except
December) in the Fort Bend County
Bud O'Shieles Community Center
1330 Band Road, Rosenberg, TX 77471

Harris County Beekeepers Association

Derek Furstenwerth - (713) 946-9497

bluemarble@furstenwerth.net

614 Vista Road - Pasadena, TX 77504

www.harriscountybeekeepers.org

Meetings: 4th Tuesday of each month
Golden Acres Center - 5001 Oak Avenue
Pasadena @ 7 pm

(continued on page 23)

Local Beekeepers' Associations in Texas

(continued from Page 22)

Heart of Texas Beekeepers Association

Gary Bowles - (254) 214-4514

gbowles@peoplepc.com

Meetings: 4th Tuesday of each month
(except December) at A1 Buffet,
301 S. Valley Mills Drive, Waco @ 6:30 pm

Houston Beekeepers Association

Rita Willhite - rwillhite@seitel-inc.com

7611 Fondren Rd - Houston, TX 77074

www.houstonbeekeepers.org

Meetings: 3rd Tuesday of each month; Bayland Community Center, 6400 Bissonnet St.
Houston @ 7:30 pm

Metro Beekeepers Association

Stan Key, President

stankey.texas@gmail.com

www.metrobeekeepers.net

8413 Castle Creek Rd., North Richland Hills,
TX 76182

Meetings: 2nd Monday of each month; United Co-op Services Community Room, Bethesda Rd at I 35 W.,
Burleson @ 6:30 pm

Montgomery County Beekeepers Assn.

John Hicks - (936) 756-9708

johnhicks12003@yahoo.com

www.mocobees.com

Meetings: 3rd Monday of each month at
Montgomery County Extension Office @ 7 pm

Permian Basin Beekeepers Association

J.C. and Dean Brittingham

(915) 332-2215

2312 N. Adams - Odessa, TX 79761

Meetings: Not meeting regularly.

Pineywoods Beekeepers Association

Cecil Hunt - (936) 632-5357

clb12@consolidated.net

301 Carriage Dr. - Lufkin, TX 75904

Meetings: 2nd Thursday of each month
Chamber of Commerce Building, Highway 287 and
Highway 58 Intersection
Lufkin @ 7:30 pm

Red River Valley Beekeepers Assn.

Bennie J. Watson - (940) 767-0207

1952 - A Hines Blvd.

Wichita Falls, TX 76301-7961

Meetings: 3rd Tuesday of each month (except December)
Bolin Science Hall, Room 209
Midwestern St. University
Wichita Falls @ 7 pm

Rio Grande Valley Beekeepers Assn.

Billy Wright - (956) 464-5042

Route 5, Box 74 - Donna, TX 78537

Meetings: 3rd Tuesday of each month; TAMU Res. and
Ext. Center, 2401 E. Highway 83
Weslaco @ 7:30 pm

Trinity Valley Beekeepers Association

Alan Eynon - (972) 231-5702, Ext. 104

abees@swbell.net

9702 Vinewood Drive - Dallas, TX 75228

www.tvbees.org

Meetings: 1st Wednesday of each month (except August),
Continuing Education Center, C.C. Young Facility, 4847
West Lawther Dr.,
Dallas, TX 75214 @ 7 - 9 pm

Walker County Area Beekeepers Assn.

Mark Short - (936) 291-1879

mshort5150@yahoo.com

34 Davis Road - Huntsville, TX 77320

Meetings: Last Thursday of each month at Walker
County Extension Office, #1 Tam Rd.
Huntsville @ 7 pm

Williamson County Beekeepers Assn.

Jimmie Oakley - (512) 388-3630

jimmie.oakley@att.net - www.wcaba.org

1799 Goodson Ct. - Round Rock, TX 78664

Meetings: 4th Tuesday of each month
(except December) 1st United Methodist Church -
410 E. University Ave
Georgetown, TX 78626 @ 7 pm

Membership Report 12-5 *by Jimmie Oakley*

2012 New Members

8/25	Burnette	Kathleen	Austin, TX	20
9/8	Parker	Owen S. 'Stan'	Fredericksburg, TX	20
9/8	Rosson	John A.	Cross Plains, TX	20
9/14	Hilliard Jr.	Henry T.	Houston, TX	20
9/19	Wade	Jean	Andrews, TX	20
9/20	Stanford	Kathy	Celia, TX	20



2012 Renewing Members

7/25	Heinz	Samuel	D'Hanis, TX	20	
7/25	Heinz	Michele	D'Hanis, TX	20	
8/1	Lawson	Martha	Killeen, TX	20	
8/2	Atkinson	John S.	Victoria, TX	20	
8/2	Crabtree	Dennis B.	Quinla, TX	20	
8/4	Camp	James M.	Lindale, TX	20	
8/6	Daley Sr.	William 'Bill' J.	Baytown, TX	25	
8/9	Sheets	Nathan	Frisco, TX	100	Century Club
8/14	Coker	Cheryl L.	San Antonio, TX	20	
8/14	Novark Jr.	James	Pasadane, TX	40	12&13
8/14	Thomas	Charles	Mabank, TX	20	
8/15	Buckner	R L 'Bob'	McKinney, TX	20	
8/15	Seida	Melody	Wylie, TX	20	
8/22	Atwood	Thomas W.	Terrell, TX	20	
8/27	Bender	Rebecca C.	Celina, TX	20	
9/6	Anderson	Karen	Wills Point, TX	20	
9/8	Dean	Larry	Tyler, TX	40	12&13



2012 Associations Renewing Membership

4/18	East Texas Beekeepers Association	Tyler, TX	25
9/12	Central Texas Beekeepers Association	Brenham, TX	25



Mail All Renewals/Inquiries to:

Jimmie L. Oakley
1799 Goodson Ct.
Round Rock, TX 78664-3706

Phone: 512/388-3630
e-mail: jimmie.oakley.att.net

SHARPEN

YOUR WRITING SKILLS



Stanford S. Brantley

of Jefferson, Texas

Challenges "YOU" to compete against
"HIM" by writing in (15 words or less)
how you got started in beekeeping

**The Winner will receive one free night stay at the
Shilo Inn in Killeen during the 2012 TBA Convention**

Submit entry to: Jimmie Oakley

jimmie.oakley@att.net

1799 Goodson Ct.

Round Rock, TX 78664

The winning entry to
be announced at the
Queen's Luncheon at
the Convention



Honey in Europe

from "Catch The Buzz"

The EU accounts for about 13% of global honey production or 200,000 tonnes. Spain is the largest producer (33,000 tonnes), followed by Italy, Hungary and Romania (which each produce around 22,000 tonnes) and Portugal (21,000 tonnes). EU honey imports amount to around 140,000 tonnes and account for 40% of total EU consumption.





American Honey Producers Association

An Organization of Beekeepers for Beekeepers
San Diego, CA JAN. 8-12, 2013

Join Us in "America's Finest City"

Featuring:

- Relevant Sessions on research & hot topics, legislature, and industry reports.
- Breeding queens for resistance workshop.
- Great opportunities to socialize with friends & fellow beekeepers.
- Direct access to our industry's leading vendors.

Special Events:

- Sunset Dinner Cruise of San Diego Bay
- Annual Banquet & Awards Ceremony
- Special Interest Session on Top-Bar Beekeeping.



44th Annual Convention & Trade Show

Hosted at the San Diego Sheraton Hotel & Marina

Convention Registration:

Early Bird (by Nov. 15): \$225.00; Pre-Register (Nov. 16-Dec. 21): \$250.00;
Regular (after Dec. 21): \$295.00

Hotel Registration:

AHPA Room Rates: Single: \$129.00/night & Double: \$139.00/night

For Registration & More Information Visit: www.ahpanet.com

Convention/Hotel Registration due Dec. 21, 2012.

Order Now... Don't Be Left Out! **SUMMER & FALL QUEENS**

Olivarez Honey Bees, Inc.

CALIFORNIA (530) 865-0298 **HAWAII** (808) 328-9249

TOLL FREE (877) 865-0298

P.O. Box 847 Orland, CA 95963
Fax (530) 865-5570

www.ohbees.com

Big Island Queens
A Division of Olivarez Honey Bees, Inc.

BIQ

Healthy Queens = Healthy Hives

VISA MasterCard

Premium Quality Queens
Produced in the Heart of
Northern California
Since 1963




BL PLASTIC CONTAINERS

For All Your Honey Packaging Needs

(No Order Too Large or Too Small)

We have four sizes of bears, cylinders, etc.

Garry & Darren Wilaby

**1425 Metro East Drive, Unit 109
Pleasant Hill, IA 50327**



**" We Built our
Business on
Service, Quality
and
Dependability. "**

Ph: 515/266-6112
Fax: 515/266-1112
www.blplasticcont.com
sales@blplasticcont.com

BROKER/APPRaiser FOR THE BEEKEEPING INDUSTRY



MORRIS WEAVER ENTERPRISES

11625 Princess Margaret Ct.
Montgomery, TX 77317

Phone/Fax 936.448.8061
Mobile 936.825.4738

www.morrisweaver.com
morrisweaver@comcast.net



Look for us on the web
www.texasbeekeepers.org

Get Your Beekeeping Insurance Here!

**TEXAS INSURANCE &
FINANCIAL SERVICES, INC.**

800-541-9849

Customized Coverage:

- Commerical General Liability
- Property Coverage
- Stock/Content Coverage
- Floater/Contractor's Equipment
- Harvested Honey
- Bee Boxes
- Worker's Compensation
- Farm & Ranch Coverage
- Group Health Insurance
- Umbrella Liability
- Commerical Auto /
Hired & Non-owned Auto

**Insurance for Large and Small Beekeepers
Licensed in over 40 states. www.txins.com
102 N. Washington St., El Campo TX 77437**

Endorsed by
American Beekeeping
Federation

Texas Beekeepers Association

Chris Doggett, Editor
400 County Road 440
Thrall, TX 76578-8701
Phone: (512) 898-5500
Cell: (512) 914-2794
ckdoggett@gmail.com

Return Service Requested

PRESORTED STANDARD
U.S. POSTAGE PAID
Webster, TX
Permit No. 184

TBA Officers-2012



President

Edward Priest
edward_p@sbcglobal.net
9570 Maidenstone
San Antonio, TX 78250
(210) 722-7380

Vice President

Blake Shook
blake@desertcreekhoney.com
1920 Grassmere Ln. #1131
McKinney, TX 75071
(214) 886-6899

Past President

Todd Youngblood
ybladhny@sbcglobal.net
526 N. Roosevelt
Pearsall, TX 78061
(830) 334-3820

Executive Secretary

John J. Talbert
john@sabinecreekhoney.com
P.O. Box 6
Josephine, TX 75164
(972) 843-8084

Treasurer

Jimmie L. Oakley
jimmie.oakley@att.net
1799 Goodson Ct.
Round Rock, TX 78664
(512) 388-3630

Publicity Director

Chris Doggett
ckdoggett@gmail.com
400 County Road 440
Thrall, TX 76578
(512) 898-5500

Directors -at-Large and Local Associations Served:

Wendy Riggs

stormyderricks@hotmail.com
5775 Blackhill Rd.
Floresville, TX 78114-6078
(830) 393-2352

Alamo Area
Rio Grande
Coastal Bend



Russell Swinney

rswinney@interstructure.net
5960 W Parker 278-125
Plano, TX 75093
(214) 619-2050

Collin County
Concho Valley
Permian Basin
Red River Valley



Clint Weaver

crweav@yahoo.com
16495 CR 319
Navasota, TX 77868
(936) 825-3642

Montgomery County
Walker County
Central Texas



Randy Johnson

arlene@hughes.net
4626 FM 196 N
Paris, TX 75462-9806
(903) 982-5889

East Texas
Pineywoods
Trinity Valley



Rodney Holloway

holloway.r@att.net
10190 Old Hearne Road
Hearne, TX 77859
(979) 297-2805

Dino
Heart of Texas
Metro
Williamson County



Chris Moore

moorehoney@cmaaccess.com
9767 Bevil Blvd.
Kountze, TX 77625
(409) 287-3377

Brazoria County
Harris Co.
Houston
Fort Bend



Dreyfus PRINTING/110 W Sealy/Alvin, TX 77511/email: info@dreyfusprinting.com/Phone: 281/331-3381 Fax: 281/331-0466